

## Review article

## Supported employment for people with severe mental illness: systematic review and meta-analysis of the international evidence

Matthew Modini, Leona Tan, Beate Brinchmann, Min-Jung Wang, Eoin Killackey, Nicholas Glozier, Arnstein Mykletun and Samuel B. Harvey

**Background**

Individual placement and support (IPS) is a vocational rehabilitation programme that was developed in the USA to improve employment outcomes for people with severe mental illness. Its ability to be generalised to other countries and its effectiveness in varying economic conditions remains to be ascertained.

**Aims**

To investigate whether IPS is effective across international settings and in different economic conditions.

**Method**

A systematic review and meta-analysis of randomised controlled trials comparing IPS with traditional vocational services was undertaken; 17 studies, as well as 2 follow-up studies, were included. Meta-regressions were carried out to examine whether IPS effectiveness varied according to geographic location, unemployment rates or gross domestic product (GDP) growth.

**Results**

The overall pooled risk ratio for competitive employment using IPS compared with traditional vocational rehabilitation was 2.40 (95% CI 1.99–2.90). Meta-regressions indicated that neither geographic area nor unemployment rates affected the overall effectiveness of IPS. Even when a country's GDP growth was less than 2% IPS was significantly more effective than traditional vocational training, and its benefits remained evident over 2 years.

**Conclusions**

Individual placement and support is an effective intervention across a variety of settings and economic conditions and is more than twice as likely to lead to competitive employment when compared with traditional vocational rehabilitation.

**Declaration of interest**

None.

**Copyright and usage**

© The Royal College of Psychiatrists 2016.

It is well documented that the employment rate for individuals with severe mental illness such as schizophrenia and bipolar affective disorder is unacceptably low.<sup>1–5</sup> People with severe mental illness face much greater challenges gaining and maintaining employment, owing to educational disadvantage,<sup>5</sup> stigmatising views in the workplace,<sup>6</sup> and the chronic or recurrent nature of their mental health symptoms. In spite of this it is clear that there are numerous benefits of employment for individuals with severe mental illness.<sup>7</sup> Besides financial benefit,<sup>8</sup> employment of individuals with severe mental illness is associated with improved self-esteem,<sup>1</sup> greater well-being, greater social contact and independence,<sup>9</sup> and reduced use of community mental health services.<sup>10</sup> As a result, it is not surprising that the majority of people with severe mental illness consistently report that they want to work,<sup>5,11</sup> with mental health services often accused of not focusing enough on this aspect of recovery.<sup>12</sup> Traditional rehabilitation models, such as clubhouse pre-vocational training and sheltered workshops, place emphasis on extensive training and preparation prior to any return to competitive (i.e. open) employment; essentially a 'train-place' model. Although they may be appropriate for some individuals, traditional models place little urgency around commencing immediate competitive employment (thus delaying the positive effects of employment) and may add to the sense of exclusion from mainstream society felt by many with severe mental illness.<sup>13</sup> An alternative approach, known as supported employment, has been developed where the emphasis is on rapidly placing an individual into competitive employment and simultaneously providing them with support to maintain this employment; a 'place-train' model. Individual placement and support (IPS) is the most structured and well-defined form of supported employment. It is based on the philosophy that anyone is capable of gaining

competitive employment, provided the right job with appropriate support can be identified.<sup>9</sup> The core principles of IPS are defined by the IPS Fidelity Scale,<sup>14</sup> with evidence suggesting IPS is most successful when fidelity is high.<sup>15</sup> The key principles of IPS are:

- (a) competitive employment as the primary goal;
- (b) eligibility based on patient choice;
- (c) integration of vocational and clinical services;
- (d) job search guided by individual preferences;
- (e) personalised benefits counselling;
- (f) rapid job search;
- (g) systematic job development;
- (h) time-unlimited support.<sup>16</sup>

There have been a number of randomised trials and reviews demonstrating that IPS is effective in achieving competitive employment for individuals with severe mental illness in the USA, where this intervention originated in the 1990s.<sup>17–19</sup> Two separate Cochrane reviews have provided evidence for IPS increasing rates of employment,<sup>20,21</sup> with separate studies demonstrating additional benefits in terms of job duration, hours worked per week and wages,<sup>22</sup> and decreased healthcare costs for successful users.<sup>10</sup> Although IPS may now be seen as the 'gold standard' approach to mental health vocational rehabilitation in the USA, its ability to be generalised to other countries has been questioned.<sup>7</sup> Several of the core components of IPS, such as the need for integration between vocational and clinical services, involve organisational and cultural factors that may vary substantially between countries. Additionally, given the focus of IPS on early competitive employment, it may be more susceptible

to external macroeconomic factors (such as the rate of economic growth and the availability of employment) than traditional vocational programmes. Uncertainty about the impact of these contextual factors on the effectiveness of supported employment programmes has been highlighted as a major barrier to the international implementation of IPS schemes.<sup>23</sup> Although one previously published review assessed non-USA trials and suggested that IPS probably could be adopted internationally,<sup>24</sup> a systematic review and meta-analysis of all the international trials of IPS, with specific consideration of the impact of different social and economic conditions, has not previously been reported.

The aim of our study was to determine whether IPS is effective in improving competitive employment rates for people with severe mental illness in different countries with varying health services and economic conditions. To the best of our knowledge this is the first systematic review and meta-analysis to directly address these issues of generalisability across countries and contexts, and will, we hope, establish whether IPS can be recommended as evidence-based practice internationally.

## Method

A systematic review and meta-analysis were conducted in accordance with the Preferred Reporting Items for Systematic Reviews and Meta-Analyses (PRISMA) guidelines ([www.prisma-statement.org](http://www.prisma-statement.org)), using a predetermined but unregistered protocol. Searches were conducted using the electronic databases Medline, PsycINFO and EMBASE for published studies from January 1993 to January 2015. The search was restricted to studies published from 1993 onwards as, to the best of our knowledge, no study investigating IPS was reported before that year. A combination of keywords relating to severe mental illness, supported employment and randomised controlled trials was used when searching the databases. The full search strategy is shown in online Table DS1. To increase coverage an additional search using the Cochrane Central Register of Controlled Trials was conducted using a combination of the search terms 'individual placement and support' or 'supported employment'. In addition, the reference lists of all studies identified by the above strategies were scrutinised to identify any relevant publications that had not been previously considered.

A study was eligible for inclusion if it was a randomised controlled trial (RCT) comparing individual placement and support with traditional vocational services; the IPS demonstrated moderate to high fidelity as measured by the IPS Fidelity Scale<sup>14</sup> or provided evidence that fidelity was adhered to; study participants had severe mental disorders, which in line with previous reviews were defined as schizophrenia or schizophrenia-like disorder, bipolar disorder or depression with psychotic features;<sup>20,21</sup> and the study was published in the English language. Papers were excluded if rate of competitive employment was not an outcome. Competitive employment was defined as a permanent job paying commensurate wages that was available to anyone (not just individuals with severe mental illness).<sup>24</sup>

## Selection process

Two researchers independently analysed each individual title and abstract in order to exclude papers that did not meet inclusion criteria. For the remaining studies the full text was obtained and analysed independently by the two researchers to confirm the paper met the inclusion criteria. To achieve consensus, any disagreement about a study's inclusion at either stage was referred to a third researcher (S.B.H.) for consideration.

## Appraisal of quality

The quality of the identified RCTs was assessed using the Downs & Black checklist.<sup>25</sup> This checklist demonstrates strong criterion validity ( $r=0.90$ ),<sup>26</sup> good interrater reliability ( $r=0.75$ ) and has previously been used in a Cochrane Collaboration review that considered mental health and the workplace.<sup>27</sup> The 27-item checklist comprises five subscales that measure reporting, external validity, bias, confounding and power.

As noted by a Cochrane Collaboration review of supported employment,<sup>20</sup> masking of patients and treating clinicians is not possible in trials of vocational rehabilitation. It is also difficult for those evaluating outcomes to remain unaware of group allocation, as they are obliged to collect data that indicate group allocation (such as days in different types of employment). For this reason questions 14 and 15 of the Downs & Black checklist, which assess masking to the intervention allocation and outcomes, were excluded. Additionally, question 27, which assessed power, was modified in that the scoring was simplified to either 0 or 1 based on whether or not there was sufficient power in the study to detect a clinically significant effect. Thus, studies reporting power of less than 0.80 with  $\alpha=0.05$  obtained a zero score. The modification of question 27 is in line with previous studies.<sup>28,29</sup>

The maximum score for the modified checklist was 26 with all individual items rated as either yes (scored 1) or no/unable to determine (scored 0), with the exception of item 5, 'Are the distributions of principal confounders in each group of subjects to be compared clearly described?' in which responses were rated as yes (2), partially (1) or no (0). The ranges of scores were grouped into four categories: excellent (24–26), good (18–23), fair (13–17) and poor (<12). Studies with an overall poor quality assessment were excluded from the final review. Two researchers independently assessed the quality of each included study. In order to achieve consensus, any disagreement about a study's quality rating was referred to a third researcher (S.B.H.) for consideration.

## Data extraction

A single author extracted the following variables from each included study: sample characteristics, country of origin, length of follow-up and rate of competitive employment achieved for the experimental and control groups. Study authors were contacted to obtain additional information when necessary. In order to capture details on the economic situation in each country where the study was conducted, data from the World Development Indicators (World Bank) online database (<http://data.worldbank.org>) were used to record the annual unemployment rate and annual gross domestic product (GDP) growth for each country. The GDP is the total value of goods produced and services provided in a country annually and is often used to gauge economic growth. The average annual unemployment rate and annual GDP growth were collected when recruitment and follow-up dates of the study were available, or alternatively the average was calculated using data from the 2 years before publication date.

## Statistical analysis

The analysis was conducted using competitive employment rates as the sole outcome. Competitive employment rates were scored in all included studies as a binary outcome (i.e. either achieved competitive employment or failed to do so) and thus risk ratios could be calculated. Three separate meta-analyses were conducted. The first comprised all included studies in order to determine the overall effectiveness of IPS compared with traditional vocational rehabilitation. Meta-regressions were carried out to analyse any

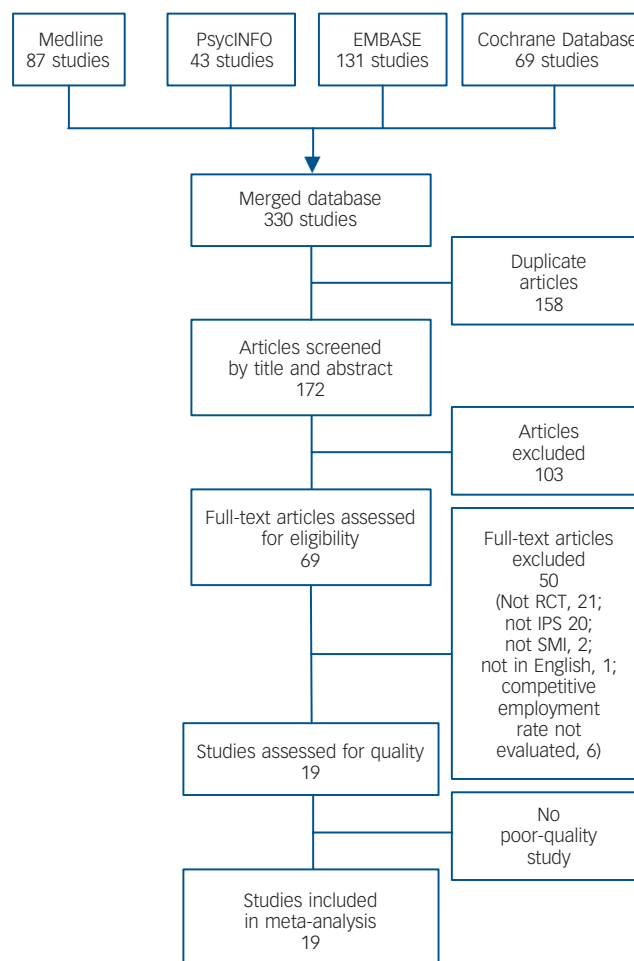
association between IPS effectiveness and region of origin (Asia and Australia *v.* Europe *v.* North America), unemployment rates and GDP growth. The second and third meta-analyses included studies in which the follow-up data were collected after 1–12 months and 13–24 months respectively, in order to determine whether any effectiveness of IPS would remain stable over a 2-year period. The meta-analyses and meta-regressions were performed in Stata/IC release 12.1 statistical programming software using the *metan* and *metreg* commands.<sup>30</sup> The pooled effects were presented as risk ratios with 95% confidence intervals. The studies were weighted using the Mantel–Haenszel model. The random effects model was used because it is a more conservative approach that assumes that all studies are estimating different effects resulting from variations in factors such as study population,<sup>31</sup> sampling variation within and between studies, and as a result produces wider confidence intervals.<sup>32</sup> To test for heterogeneity Cochran's *Q* statistic and the  $I^2$  statistic were reported. An  $I^2$  value of 0% denotes no observed heterogeneity; 25% is low, 50% is moderate and 75% is high heterogeneity.<sup>31</sup> Publication bias occurs when the published studies are unrepresentative of all conducted studies owing to the tendency to submit or accept manuscripts on the basis of the strength or direction of the results.<sup>33</sup> Publication bias was determined through visual inspection of funnel plots.

## Results

The detailed search in all databases identified a total of 172 titles. The title and abstract of each were examined independently by two researchers, who identified 69 articles as relevant to the research question. A further appraisal of the full text version of these articles resulted in 17 studies meeting the criteria for inclusion,<sup>18,19,34–48</sup> as well as 2 studies with a longer follow-up of previously analysed data,<sup>49,50</sup> resulting in 19 studies being included in this meta-analysis (Fig. 1). Where two studies used the same data source with different lengths of follow-up, we included data only from the longer or most appropriate length follow-up in each meta-analysis. One study presented data for two control groups,<sup>44</sup> which were aggregated to form a single control group. Studies were split into geographic regions, with four studies conducted in countries in Asia and Australia, six studies in Europe and nine in North America. No additional article was identified by analysing the reference lists of the studies identified from the above strategy. Tables 1 and 2 briefly summarise characteristics of the included studies, including average unemployment rate and annual GDP growth at the time of each study; full details of the interventions are given in online Tables DS2 and DS3. None of the countries experienced negative GDP growth at the time of data collection, indicating that their economies were not in recession; however, GDP growth among the countries ranged from 0.7% to 6.6%, indicating a wide variability.

Two researchers independently assessed the quality of the 19 included studies. An interrater reliability of 0.74 (Cohen's kappa coefficient) was computed. Two studies were found to be of fair quality,<sup>40,46</sup> and 17 studies were found to be of good quality,<sup>18,19,34–39,41–45,47–50</sup> with final assessment scores ranging from 16 to 23. No study was excluded from the meta-analyses owing to poor quality.

The first meta-analysis assessed whether IPS was effective in improving competitive employment rates for people with severe mental illness. This meta-analysis comprised all included studies with the exception of two publications,<sup>39,40</sup> as other studies included in this meta-analysis analysed the same sample but with a longer follow-up period.<sup>49,50</sup> Additionally, one study was



**Fig. 1** Systematic literature search and quality assessment. IPS, individual placement and support; RCT, randomised controlled trial; SMI, serious mental illness.

conducted in six different European countries and so the competitive employment outcome for each location was extracted and included separately in the meta-analysis.<sup>36</sup> Figure 2 presents the risk ratios for competitive employment in each of the 17 studies included in this meta-analysis, the pooled risk ratio for Asian and Australian, European and North American studies and the overall pooled risk ratio (PRR) using a random effects model for all included studies. The overall PRR for gaining competitive employment for IPS compared with traditional vocational rehabilitation was 2.40 (95% CI 1.99–2.90). Moderate heterogeneity was detected ( $Q = 62.70$ ,  $I^2 = 66.5\%$ ,  $P < 0.001$ ). Two studies included in this meta-analysis used a sample of individuals with arguably less severe mental illness: one studied individuals with stabilised mental illness,<sup>39</sup> and the other individuals with first-episode psychosis.<sup>41</sup> The analysis was re-run with these two studies excluded in order to determine whether they were positively biasing the results, but the results were almost identical to the overall analysis, with a PRR of 2.40 (95% CI 1.97–2.92).

Three meta-regressions were carried out to analyse any association between IPS effectiveness and geographic region (Asia and Australia *v.* Europe *v.* North America), unemployment rate and GDP growth. The meta-regressions indicated that neither unemployment rate nor geographic region significantly accounted for the heterogeneity ( $P > 0.1$  for both). However, the meta-regression for GDP growth indicated that IPS was relatively more effective in the setting of higher GDP growth ( $\beta = 0.13$ , *s.e.* = 0.59,

**Table 1** Summary of studies included in meta-analyses from Asian, Australian and European countries

Study	Country	Unemployment (annual %) <sup>a</sup>	GDP growth (annual %) <sup>b</sup>	<i>n</i>	Comparison group <sup>c</sup>	Follow-up (months)	Results
Burns <i>et al</i> (2007) <sup>36</sup>	UK Germany Italy Switzerland The Netherlands Bulgaria	4.8 10.2 8.2 4.3 4.3 11.9	3.2 0.4 0.9 1.9 1.5 6.0	156	The best alternative vocational rehabilitation service available at each centre	18	IPS group significantly more likely to gain competitive employment or at least 1 day (55% v. 28%)
Bejerholm <i>et al</i> (2015) <sup>34</sup>	Sweden	7.8	0.7	120	TVR from various nationally run services	18	Significantly more IPS participants obtained competitive employment (46% v. 11%)
Howard <i>et al</i> (2010) <sup>40</sup>	UK	5	2.8	197	TAU	12	No significant difference between IPS (13%) and TAU (7%) in obtaining competitive employment
Heslin <i>et al</i> (2011) <sup>49</sup> (follow-up study of Howard <i>et al</i> , 2010)	UK			188	TAU	24	Significantly more IPS participants obtained competitive employment v. TAU (22% v. 11%)
Hoffmann <i>et al</i> (2012) <sup>39</sup>	Switzerland	4.3	2.4	100	TVR	24	Supported employment group more likely to be competitively employed than TVR group (45.7% v. 16.7%)
Hoffmann <i>et al</i> (2014) <sup>50</sup> (follow-up study of Hoffmann <i>et al</i> , 2012)	Switzerland			100	TVR	60	Supported employment group more likely to be competitively employed than TVR group (65% v. 33%)
Killackey <i>et al</i> (2008) <sup>41</sup>	Australia	4.9	3.1	41	TAU	6	Significantly more IPS participants obtained competitive employment v. TAU (31.7% v. 9.5%)
Oshima <i>et al</i> (2014) <sup>45</sup>	Japan	4	3.9	37	CVR		Significantly more IPS participants obtained competitive employment v. CVR (44.4% v. 10.5%)
Tsang <i>et al</i> (2009) <sup>46</sup>	Hong Kong	6.7	6.6	163	TVR	15	IPS group had better rates of competitive employment than TVR group (53.6% v. 7.3%)
Wong <i>et al</i> (2008) <sup>48</sup>	Hong Kong	6.8	1.8	92	CVR	18	Significantly more of the supported employment group obtained competitive employment over 12 months of follow-up compared with CVR (70% v. 29%)

CVR, conventional vocational rehabilitation; GDP, gross domestic product; IPS, individual placement and support; TAU, treatment as usual; TVR, traditional vocational rehabilitation; TVS, traditional vocational services.  
a. General population unemployment; data collected from the World Development indicators online database.  
b. Data collected from the World Development indicators online database.  
c. Details of comparison treatments are given in online Table DS2.

95% CI 0.00–0.25,  $P = 0.045$ ). In spite of this trend, even when only studies carried out in the setting of relatively low GDP growth (less than 2%) were included, IPS remained more effective at gaining competitive employment, with PRR of 1.82 (95% CI 1.37–2.40).

Subsequent meta-analyses aimed to determine whether the effectiveness of IPS would remain stable over a 2-year period. Two studies were included in both these meta-analyses as data were recorded over both specified periods.<sup>46,48</sup> Although one study presented follow-up data at 5 years,<sup>50</sup> only the original study presenting data at 2 years was included in the 13–24 month follow-up meta-analysis,<sup>39</sup> to maintain consistency between follow-up rates across all studies. Figure 3 presents the risk ratios for competitive employment in each of the seven studies that had a 1–12 month follow-up period.<sup>36,39,45–49</sup> The pooled risk ratio for gaining competitive employment within the first year after IPS was commenced, compared with traditional vocational rehabilitation, was 2.59 (95% CI 1.88–3.56). Low heterogeneity was detected ( $Q = 7.09$ ,  $I^2 = 15.4\%$ ,  $P = 0.31$ ). Figure 4 presents the risk ratios for competitive employment in each of the 13 studies that had a 13–24 month follow-up period.<sup>18,19,34–39,43,44,46,48,49</sup> The pooled

risk ratio for gaining competitive employment within the second year after IPS was commenced, compared with traditional vocational rehabilitation, was 2.41 (95% CI 1.96–2.97).

A funnel plot (online Fig. DS1) showed some mild asymmetry, indicating possible small study effects, with a tendency for estimates of the relative effectiveness of IPS to be greater among smaller studies. A sensitivity analysis was conducted excluding all studies with fewer than 100 participants. The results of this analysis were similar to the overall analysis, with PRR = 2.59 (95% CI 1.96–3.42). Separate sensitivity analyses were conducted to examine the possible effect of study quality, in particular the impact of removal of the two studies that scored 'fair' on the quality assessment.<sup>40,46</sup> The removal of these studies did not significantly affect the overall results (PRR = 2.32, 95% CI 1.94–2.77).

## Discussion

This paper represents the first published systematic review and meta-analysis specifically examining the effectiveness of IPS across a range of international and economic conditions. Our results indicate that IPS was effective in gaining competitive employment

**Table 2** Summary of studies included in meta-analyses from North American countries

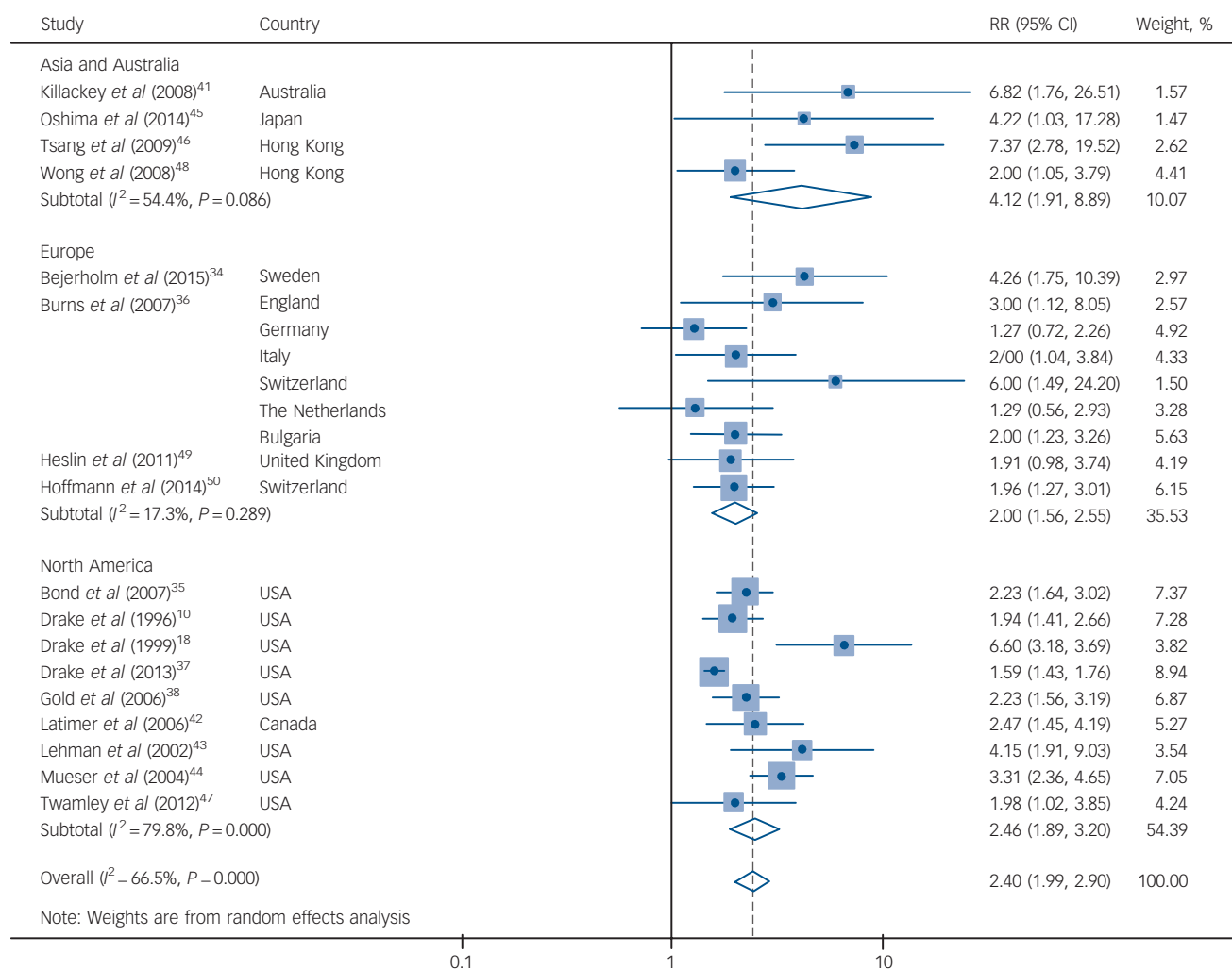
Study	Country	Unemployment (annual %) <sup>a</sup>	GDP growth (annual %) <sup>b</sup>	<i>n</i>	Comparison group <sup>c</sup>	Follow-up (months)	Results
Bond <i>et al</i> (2007) <sup>35</sup>	USA	4.8	2.9	187	DPA	24	Significantly more IPS participants obtained competitive employment v. DPA (75% v. 33.7%)
Drake <i>et al</i> (1996) <sup>19</sup>	USA	6	3.4	143	GST	18	Significantly more IPS participants obtained competitive employment v. GST (78.1% v. 40.3%)
Drake <i>et al</i> (1999) <sup>18</sup>	USA	6	3.4	152	EVR	18	Significantly more IPS participants obtained competitive employment v. EVR (60.8% v. 9.2%)
Drake <i>et al</i> (2013) <sup>37</sup>	USA	8.6	2	2055	Usual care over the 23 study sites	24	Significantly more participants obtained competitive employment in supported employment v. control (52.4% v. 33%)
Gold <i>et al</i> (2006) <sup>38</sup>	USA	4.3	4.5	143	Gradual work-adjusted experiences followed by placement in a 'set-aside' job	24	Significantly more IPS participants held competitive jobs v. control (64% v. 26%)
Latimer <i>et al</i> (2006) <sup>42</sup>	Canada	7.5	2.1	149	TVS	12	Significantly more in supported employment obtained competitive employment over 12 months follow-up v. TVS (47% v. 18%)
Lehman <i>et al</i> (2002) <sup>43</sup>	USA	5	4.3	219	In-house vocational training	24	Significantly more IPS participants obtained competitive employment v. control (27% v. 7%)
Mueser <i>et al</i> (2004) <sup>44</sup>	USA	5	4.3	204	PSR or brokered supported employment	24	Significantly more IPS participants obtained competitive employment (73.9%) v. PSR (18.2%) or brokered supported employment (27.5%)
Twamley <i>et al</i> (2012) <sup>47</sup>	USA	9.4	2.1	58	CVR	12	Significantly more IPS participants obtained competitive employment v. CVR (57% v. 29%)

CVR, conventional vocational rehabilitation; DPA, diversified placement approach; EVR, enhanced vocational rehabilitation; GDP, gross domestic product; GST, group skills training; IPS, individual placement and support; PSR, psychosocial rehabilitation; TVS, traditional vocational services.  
a. General population unemployment; data collected from the World Development indicators online database.  
b. Data collected from the World Development Indicators online database.  
c. Details of comparison treatments are given in online Table DS3.

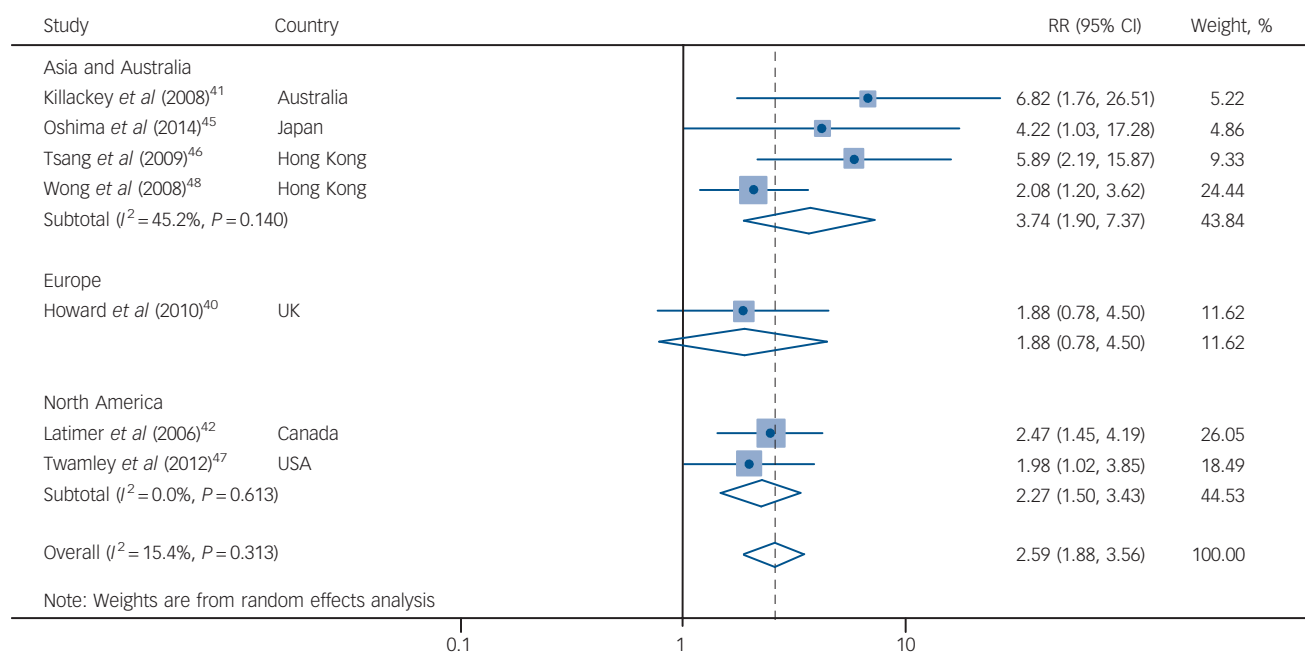
for people with severe mental illness in a wide range of settings, with individuals receiving it being more than twice as likely to gain competitive employment as those undergoing traditional vocational rehabilitation. Furthermore, the benefits of IPS can be demonstrated in a wide range of international settings regardless of the country's unemployment rate, and remained stable across a 2-year period, with similar pooled effect sizes obtained for year 1 and year 2 follow-up data. However, there is evidence that a country's GDP growth does have an impact on the relative effectiveness of IPS. Although the relative benefits of IPS were less in tough economic times, even when GDP growth was low (below 2%) IPS remained significantly more effective at gaining those with severe mental illness competitive employment compared with traditional vocational training.

Our results are in agreement with previous systematic reviews in demonstrating the overall effectiveness of IPS.<sup>20,21</sup> The key addition made by our updated systematic review and meta-analysis is a direct testing of the generalisability of IPS across different cultural and economic settings. Our finding that IPS has reduced benefit over traditional models of vocational rehabilitation when there is low economic growth is not surprising; it relies on competitive job acquisition so is likely to be more susceptible to macroeconomic factors. Given this, and the direct relationship between GDP growth and unemployment rates, it is notable that

unemployment rates did not have an impact on the relative effectiveness of IPS. This may relate to GDP growth being a more sensitive measure of the overall economic condition and the employment market for those with disabilities. While noting the impact of GDP growth, the overall conclusion of the various analyses presented in this paper is that IPS is more effective than traditional models of vocational rehabilitation regardless of the prevailing cultural or economic conditions. Given this, it is important to consider barriers that might limit the international uptake of IPS as part of standard clinical practice. An editorial in the *British Journal of Psychiatry* summarised the key barriers to wider implementation of IPS into three categories: attitudinal barriers relating to the beliefs of both clinicians and employers; contextual factors relating to the structure of the labour market and welfare systems; and organisational factors within mental health services.<sup>23</sup> One of the key organisational issues in many countries is the physical and organisational separation between disability employment and mental health services.<sup>51</sup> High-fidelity IPS, which appears essential for effectiveness,<sup>22</sup> is impossible to achieve without some integration between those responsible for coordination of clinical care and those directly involved in job search and occupational support. As noted earlier, uncertainty about whether IPS would remain effective in different social and economic settings may have contributed to the relative inaction



**Fig. 2** Relative risk (RR) of competitive employment for groups receiving individual placement and support (IPS) compared with standard vocational rehabilitation (RR > 1 indicates greater rates of competitive employment among those receiving IPS).



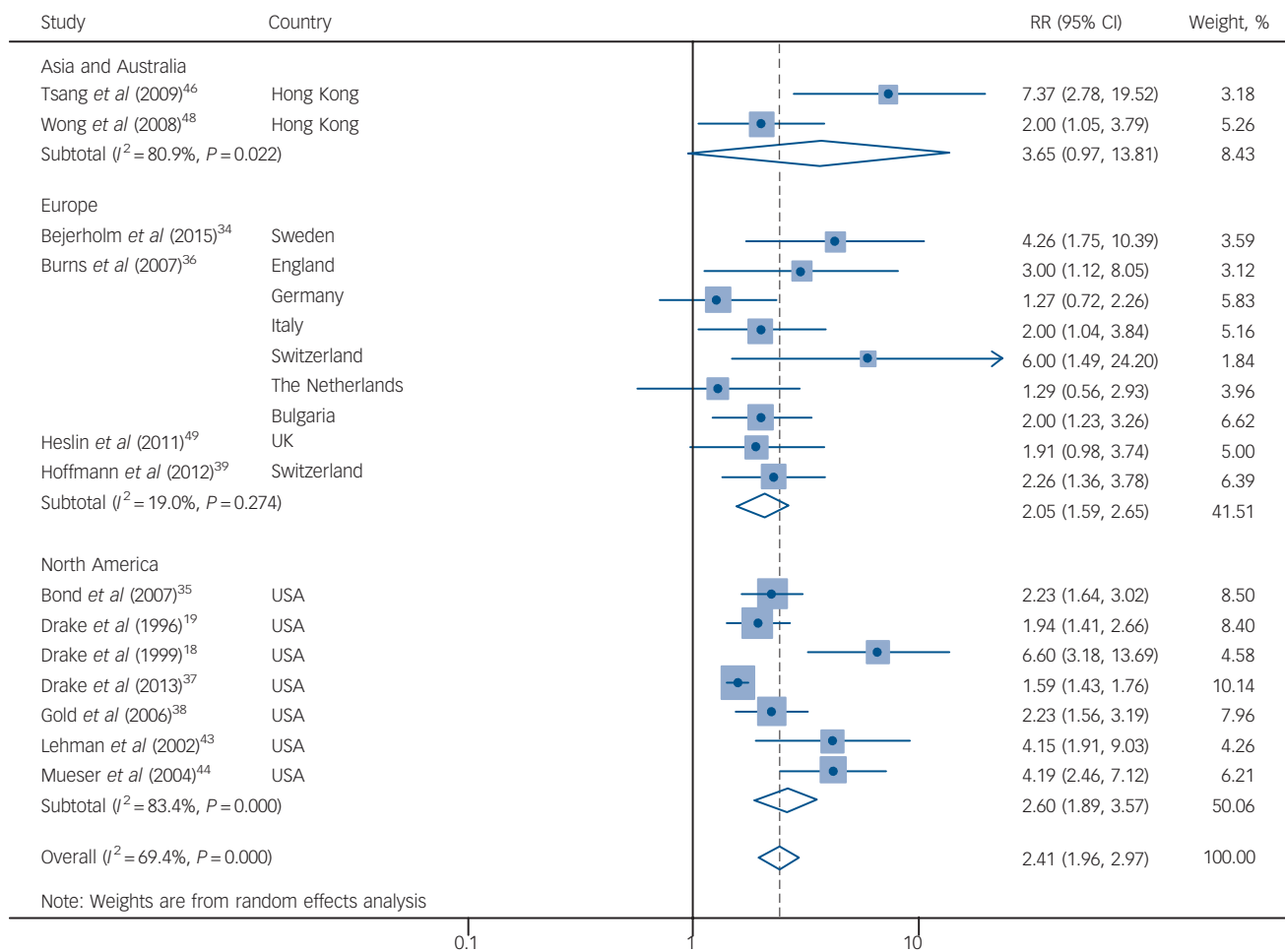
**Fig. 3** Relative risk (RR) of competitive employment within 1–12 months of receiving individual placement and support compared with standard vocational rehabilitation.

in addressing some of these barriers.<sup>23</sup> The results of this meta-analysis, in particular the clear evidence that IPS remains more effective than traditional vocational rehabilitation across a range of international and economic settings, allows greater pressure to be placed on policy-makers and leaders to begin addressing some of the structural and attitudinal barriers preventing wider international uptake of IPS. Better education of clinicians about employment possibilities, vocational recovery and the evidence for IPS will be important, but may need to be aided by more direct policy initiatives, such as considering employment as a key outcome measure for mental health services.<sup>23</sup>

At present it is not clear which of the core features of IPS are most important for its success, but it is likely that a number of factors are critical. The integration of clinical and vocational services is likely to elevate the importance of vocational outcomes within clinical teams, who might otherwise focus on symptom reduction. Second, by beginning job searches immediately, IPS challenges traditional ideas that individuals need to be totally well and free from symptoms prior to returning to the workplace. This is important because the longer individuals are out of work the less likely it becomes that they will return to work, partly owing to deterioration in skills, but more probably owing to increased feelings of anxiety and perceived vulnerability.<sup>52</sup> Recent research within occupational medicine more broadly has confirmed the idea that individuals do not need to be symptom-free before returning to work,<sup>52-54</sup> which has led to the implementation of schemes to encourage earlier, partial returns to the workplace, such as 'fit notes' in the UK.<sup>55</sup>

### Strengths and limitations

In order to be satisfied that there was consistency of the intervention being examined across different cultural, social and economic situations, we examined only studies that were able to demonstrate moderate to high fidelity to the IPS method. Although this is an important strength of the study and was necessary to meet our primary aim, it does limit the range of fidelity scores included and therefore precludes examination of the impact of fidelity scores on the effectiveness of IPS. Another possible moderator not directly examined was the impact of different social security systems, welfare benefits employment practice and regulation. However, included studies were from a wide variety of countries which undoubtedly have different employment and benefits practices and regulations; the fact that country of origin did not significantly account for heterogeneity provides some indirect evidence that IPS is effective in a wide range of systems, although in the future it would be useful for the role of these factors to be addressed more directly. Publication bias is an inherent issue for any meta-analysis. The funnel plot for this meta-analysis showed some asymmetry, suggesting possible small study effects. There are a number of potential causes for asymmetry in a funnel plot, including publication bias, varying methodological quality, artefact or chance.<sup>31</sup> Reassuringly, a number of sensitivity analyses provided evidence against any significant small study effects, with the overall estimates of IPS effectiveness not altering substantially when all small studies were excluded. There were also some limitations within the included studies which should be highlighted. First, the length of employment deemed to be sufficient



**Fig. 4** Relative risk (RR) of competitive employment within 13–24 months of receiving individual placement and support compared with standard vocational rehabilitation.

to be labelled competitive employment differed, ranging from being in employment for 1 day,<sup>36</sup> to being in employment for 1 month.<sup>40,49</sup> Second, the control conditions varied among the included studies, with some being more active than others. Finally, as mentioned previously, masking of participants, treating clinicians and those evaluating outcome is often not possible in trials of vocational rehabilitation. Although this may lead to an overestimate of effectiveness, it is a problem inherent in almost all vocational rehabilitation research.<sup>20</sup>

## Study implications

This study provides strong evidence that IPS is effective in a variety of international settings, with its impact on competitive employment rates remaining for at least 2 years irrespective of economic conditions. Given these findings, policy-makers and clinicians need to begin addressing the barriers preventing wide-scale use of supported employment principles, to ensure access to high-fidelity IPS is made available to those with severe mental illness regardless of where they live or the prevailing economic conditions.

**Matthew Modini**, BPsych, **Leona Tan**, MPsych, School of Psychiatry, University of New South Wales, Sydney, Australia; **Beate Brinchmann**, MA PsyD, Nordland Hospital Trust, Bodø, and University of Tromsø – Arctic University of Norway, Tromsø, Norway; **Min-Jung Wang**, MSc, School of Psychiatry, University of New South Wales, Sydney; **Eoin Killackey**, DPsych, Centre for Youth Mental Health, University of Melbourne, and Orygen, The National Centre of Excellence in Youth Mental Health, Melbourne, Australia; **Nicholas Glozier**, PhD, Brain and Mind Centre, Central Clinical School, Sydney Medical School, University of Sydney, Sydney, Australia; **Arnstein Mykletun**, PhD, Norwegian Institute of Public Health, Bergen and Oslo, and The Arctic University of Norway, Department of Community Medicine, Tromsø, in collaboration with Nordland Hospital Trust, Bodø, Norway; **Samuel B. Harvey**, PhD, School of Psychiatry, University of New South Wales, Black Dog Institute, Sydney, and St George Hospital, Kogarah, Australia

**Correspondence:** A/Prof. Samuel B. Harvey, School of Psychiatry, University of New South Wales, Black Dog Institute Building, Hospital Road, Randwick, NSW 2031, Australia. Email: s.harvey@unsw.edu.au

First received 12 Feb 2015, final revision 12 May 2015, accepted 13 Jul 2015

## Funding

The study was funded by the Mental Health and Drug and Alcohol Office of the New South Wales Ministry of Health in Australia. The funders of the study had no role in study design, data collection, data analysis, data interpretation, or writing of the report.

## References

- Lehman AF. Vocational rehabilitation in schizophrenia. *Schizophr Bull* 1995; **21**: 645–56.
- Kooyman I, Dean K, Harvey S, Walsh E. Outcomes of public concern in schizophrenia. *Br J Psychiatry* 2007; **191** (suppl 50): s29–36.
- Marwaha S, Johnson S, Bebbington P, Stafford M, Angermeyer MC, Brugh T, et al. Rates and correlates of employment in people with schizophrenia in the UK, France and Germany. *Br J Psychiatry* 2007; **191**: 30–7.
- O'Brien M, Singleton N, Sparks J, Meltzer H, Brugha T. *Adults With a Psychotic Disorder Living in Private Households, 2000*. TSO (The Stationery Office), 2002.
- Waghorn G, Saha S, Harvey C, Morgan VA, Waterreus A, Bush R, et al. 'Earning and learning' in those with psychotic disorders: the second Australian national survey of psychosis. *Aust NZ J Psychiatry* 2012; **46**: 774–85.
- Glozier N. Workplace effects of the stigmatization of depression. *J Occup Environ Med* 1998; **40**: 793–800.
- Harvey SB, Modini M, Christensen H, Glozier N. Severe mental illness and work: what can we do to maximise the employment opportunities for individuals with psychosis? *Aust NZ J Psychiatry* 2013; **47**: 421–4.
- Wadhell G, Burton A. *Is Work Good For Your Health and Well-Being?* TSO (The Stationery Office), 2006.
- Bond GR. Supported employment: evidence for an evidence-based practice. *Psychiatr Rehabil J* 2004; **27**: 345–59.
- Bush PW, Drake RE, Xie H, McHugo GJ, Haslett WR. The long-term impact of employment on mental health service use and costs for persons with severe mental illness. *Psychiatr Serv* 2009; **60**: 1024–31.
- Secker J, Grove B, Seebohm P. Challenging barriers to employment, training and education for mental health service users: the service user's perspective. *J Ment Health* 2001; **10**: 395–404.
- Harvey SB, Henderson M, Lelliott P, Hotopf M. Mental health and employment: much work still to be done. *Br J Psychiatry* 2009; **194**: 201–3.
- Waghorn G, Lloyd C, Clune A. Reviewing the theory and practice of occupational therapy in mental health rehabilitation. *Br J Occup Ther* 2009; **72**: 314–23.
- Bond GR, Becker DR, Drake RE, Vogler KM. A fidelity scale for the individual placement and support model of supported employment. *Rehab Couns Bull* 1997; **40**: 265–84.
- Bond GR, Peterson AE, Becker DR, Drake RE. Validation of the Revised Individual Placement and Support Fidelity Scale (IPS-25). *Psychiatr Serv* 2012; **63**: 758–63.
- Drake R, Bond G, Becker DR. *Individual Placement and Support: An Evidence-Based Approach to Supported Employment (Evidence Based Practice)*. OUP, 2012.
- Bond GR, Drake RE, Becker DR. An update on randomized controlled trials of evidence-based supported employment. *Psychiatr Rehabil J* 2008; **31**: 280–90.
- Drake RE, McHugo GJ, Bebout RR, Becker DR, Harris M, Bond GR, et al. A randomized clinical trial of supported employment for inner-city patients with severe mental disorders. *Arch Gen Psychiatry* 1999; **56**: 627–33.
- Drake RE, McHugo GJ, Becker DR, Anthony WA, Clark RE. The New Hampshire study of supported employment for people with severe mental illness. *J Consult Clin Psychol* 1996; **64**: 391–9.
- Crowther R, Marshall M, Bond G, Huxley P. Vocational rehabilitation for people with severe mental illness. *Cochrane Database Syst Rev* 2001; **2**: CD003080.
- Kinoshita Y, Furukawa TA, Kinoshita K, Honyashiki M, Omori IM, Marshall M, et al. Supported employment for adults with severe mental illness. *Cochrane Database Syst Rev* 2013; **9**: CD008297.
- Bond GR, Campbell K, Drake RE. Standardizing measures in four domains of employment outcomes for individual placement and support. *Psychiatr Serv* 2012; **63**: 751–7.
- Boardman J, Rinaldi M. Difficulties in implementing supported employment for people with severe mental health problems. *Br J Psychiatry* 2013; **203**: 247–9.
- Bond GR, Drake RE, Becker DR. Generalizability of the Individual Placement and Support (IPS) model of supported employment outside the US. *World Psychiatry* 2012; **11**: 32–9.
- Downs SH, Black N. The feasibility of creating a checklist for the assessment of the methodological quality both of randomised and non-randomised studies of health care interventions. *J Epidemiol Community Health* 1998; **52**: 377–84.
- Olivo SA, Macedo LG, Gadotti IC, Fuentes J, Stanton T, Magee DJ. Scales to assess the quality of randomized controlled trials: a systematic review. *Phys Ther* 2008; **88**: 156–75.
- Nieuwenhuisen K, Bultmann U, Neumeier-Gromen A, Verhoeven AC, Verbeek JH, van der Feltz-Cornelis CM. Interventions to improve occupational health in depressed people. *Cochrane Database of Systematic Reviews* 2008; **2**: CD006237.
- Samoocha D, Bruinvels DJ, Elbers NA, Anema JR, van der Beek AJ. Effectiveness of web-based interventions on patient empowerment: a systematic review and meta-analysis. *J Med Internet Res* 2010; **12**: e23.
- Reichert FF, Menezes AMM, Wells JC, Dumith SC, Hallal PC. Physical activity as a predictor of adolescent body fatness: a systematic review. *Sports Med* 2009; **39**: 279–94.
- StataCorp. *Stata Statistical Software: Release 12.1*. Stata Corporation, 2012.
- Higgins JPT, Green S (eds). *Cochrane Handbook for Systematic Reviews of Interventions Version 5.1.0* (updated March 2011) Cochrane Collaboration, 2011 ([www.cochrane-handbook.org](http://www.cochrane-handbook.org)).
- Sutton AJ, Abrams KR, Jones DR. An illustrated guide to the methods of metaanalysis. *J Eval Clin Pract* 2001; **7**: 135–48.
- Dickersin K. The existence of publication bias and risk factors for its occurrence. *JAMA* 1990; **263**: 1385–9.



- 34 Bejerholm U, Areberg C, Hofgren C, Sandlund M, Rinaldi M. Individual Placement and Support in Sweden – a randomized controlled trial. *Nord J Psychiatry* 2015; **69**: 57–66.
- 35 Bond GR, Salyers MP, Dincin J, Drake R, Becker DR, Fraser VV, et al. A randomized controlled trial comparing two vocational models for persons with severe mental illness. *J Consult Clin Psychol* 2007; **75**: 968–82.
- 36 Burns T, Catty J, Becker T, Drake RE, Fioritti A, Knapp M, et al. The effectiveness of supported employment for people with severe mental illness: a randomised controlled trial. *Lancet* 2007; **370**: 1146–52.
- 37 Drake RE, Frey W, Bond GR, Goldman HH, Salkever D, Miller A, et al. Assisting Social Security Disability Insurance beneficiaries with schizophrenia, bipolar disorder, or major depression in returning to work. *Am J Psychiatry* 2013; **170**: 1433–41.
- 38 Gold PB, Meisler N, Santos AB, Carnemolla MA, Williams OH, Keleher J. Randomized trial of supported employment integrated with Assertive Community Treatment for rural adults with severe mental illness. *Schizophr Bull* 2006; **32**: 378–95.
- 39 Hoffmann H, Jackel D, Glauser S, Kupper Z. A randomised controlled trial of the efficacy of supported employment. *Acta Psychiatr Scand* 2012; **125**: 157–67.
- 40 Howard LM, Heslin M, Leese M, McCrone P, Rice C, Jarrett M, et al. Supported employment: randomised controlled trial. *Br J Psychiatry* 2010; **196**: 404–11.
- 41 Killackey E, Jackson HJ, McGorry PD. Vocational intervention in first-episode psychosis: individual placement and support v. treatment as usual. *Br J Psychiatry* 2008; **193**: 114–20.
- 42 Latimer EA, Lecomte T, Becker DR, Drake RE, Duclos T, Piat M, et al. Generalisability of the individual placement and support model of supported employment: results of a Canadian randomised controlled trial. *Br J Psychiatry* 2006; **189**: 65–73.
- 43 Lehman AF, Goldberg R, Dixon LB, McNary S, Postrado L, Hackman A, et al. Improving employment outcomes for persons with severe mental illnesses. *Arch Gen Psychiatry* 2002; **59**: 165–72.
- 44 Mueser KT, Clark RE, Haines M, Drake RE, McHugo GJ, Bond GR, et al. The Hartford study of supported employment for persons with severe mental illness. *J Consult Clin Psychol* 2004; **72**: 479–90.
- 45 Oshima I, Sono T, Bond GR, Nishio M, Ito J. A randomized controlled trial of individual placement and support in Japan. *Psychiatr Rehab J* 2014; **37**: 137–43.
- 46 Tsang HWH, Chan A, Wong A, Liberman RP. Vocational outcomes of an integrated supported employment program for individuals with persistent and severe mental illness. *J Behav Ther Exp Psychiatry* 2009; **40**: 292–305.
- 47 Twamley EW, Vella L, Burton CZ, Becker DR, Bell MD, Jeste DV. The efficacy of supported employment for middle-aged and older people with schizophrenia. *Schizophr Res* 2012; **135**: 100–4.
- 48 Wong KK, Chiu R, Tang B, Mak D, Liu J, Chiu SN. A randomized controlled trial of a supported employment program for persons with long-term mental illness in Hong Kong. *Psychiatr Serv* 2008; **59**: 84–90.
- 49 Heslin M, Howard L, Leese M, McCrone P, Rice C, Jarrett M, et al. Randomized controlled trial of supported employment in England: 2 year follow-up of the Supported Work and Needs (SWAN) study. *World Psychiatry* 2011; **10**: 132–7.
- 50 Hoffmann H, Jackel D, Glauser S, Mueser KT, Kupper Z. Long-term effectiveness of supported employment: 5-year follow-up of a randomized controlled trial. *Am J Psychiatry* 2014; **171**: 1183–90.
- 51 Organisation for Economic Co-operation and Development. *Sick on the Job? Myths and Realities About Mental Health and Work*. OECD, 2012.
- 52 Henderson M, Harvey SB, Overland S, Mykletun A, Hotopf M. Work and common psychiatric disorders. *J R Soc Med* 2011; **104**: 198–207.
- 53 Waddell G, Burton AK, Kendall NAS. *Vocational Rehabilitation: What Works, For Whom, and When?* TSO (The Stationery Office), 2006.
- 54 Harvey SB, Henderson M. Occupational psychiatry. *Psychiatry* 2009; **8**: 174–8.
- 55 Shiels C, Hillage J, Pollard E, Gabbay M. *Evaluation of the Statement of Fitness for Work (Fit Note): Quantitative Survey of Fit Notes*. Department for Work and Pensions, 2013.



100  
words

## Cicero's description of mental disorder

John H. M. Crichton

Mentally unwell Romans could be denied property rights, but Cicero (106–43 BCE) drew a distinction between a lack of mental soundness, termed *insania* or *dementia*, and a more serious condition, *furens*, a delusional condition incompatible with ordinary life. *Furens* – literally bedevilled – is derived from the Furies (Latinised from the Greek goddesses, the Erinyes), a trio of blood-thirsty avenging goddesses of Hades, who could afflict anybody, even the wise and well balanced. In contrast, *insania* was a feature of moral weakness; commonly translated as ‘insanity’ it bears little resemblance to the total lack of mental reasoning associated with the insanity defence.

The British Journal of Psychiatry (2016)  
209, 22. doi: 10.1192/bjp.bp.116.182147

Data supplement to Modini et al. Supported employment for people with severe mental illness: systematic review and meta-analysis care during the maternal period: combined analysis of routine and cohort data. Br J Psychiatry doi: 10.1192/bjp.bp.115.165092

**Table DS1** Search strategies for academic databases

Medline	PsycINFO	EMBASE
1. psychos?s.mp.	1. psychos?s.mp.	1. psychos?s.mp
2. "severe mental illness".mp	2. "severe mental illness".mp	2. "severe mental illness".mp
3. exp Mental Disorders/	3. exp mental disease/	3. exp Mental Disorders/
4. 1 or 2 or 3	4. 1 or 2 or 3	4. 1 or 2 or 3
5. "supported employment".mp	5. "supported employment".tw.	5. "supported employment".mp
6."individual placement and support".mp	6. "individual placement and support".mp	6. "individual placement and support".mp
7. exp Employment, Supported/	7. 5 or 6	7. exp Supported Employment/
8. 5 or 6 or 7	8. RCT.mp	8. 5 or 6 or 7
9. RCT.mp	9. "randomi?ed controlled trial".mp	9. RCT.mp
10. "Randomi?ed controlled trial".mp	10. "clinical trial".mp.	10. "randomi?ed controlled trial".mp
11. randomized controlled trial.pt.	11. randomized controlled trial.sh.	11. exp Clinical Trials/
12. controlled clinical trial.pt.	12. 8 or 9 or 10 or 11	12. 9 or 10 or 11
13. 10 or 11 or 12 or 13	13. 4 and 7 and 12	13. 4 and 8 and 12
14. 4 and 8 and 13		

**Table DS2** Summary of studies included in meta-analyses from Asian, Australian and European countries

Study	Country	Unemployment rate for general population (annual %) †	GDP growth (annual %) †	Subjects	Details of comparison group	Follow-up (months)	Results
Burns et al (2007)	UK	4.8	3.2	156	The best alternative vocational rehabilitation service available at each centre was used as the comparison condition. Rehabilitation consisted of assessment of participants rehabilitation needs followed by a structured training program aimed at combating deficits related to illness and training in appropriate work skills (e.g. information technology skills).	18	Participants assigned to IPS were significantly more likely to gain competitive employment for at least 1 day compared to those assigned to the vocational services condition (55% v 28%)
	Germany	10.2	0.4				
	Italy	8.2	0.9				
	Switzerland	4.3	1.9				
	Netherlands	4.3	1.5				
	Bulgaria	11.9	6.0				
Bejerholm et al (2015)	Sweden	7.8	0.7	120	Traditional Vocational rehabilitation (TVR) from various nationally run services. Typically prevocational training at each centre consisted of sheltered workshops in a stepwise manner. Some participants also enrolled themselves in clubhouse activities	18	Significantly more participants obtained competitive employment in the IPS condition than in TVR condition (46% v 11%)
Howard et al (2010)	UK	5	2.8	197	Treatment as usual (TAU), which consisted of existing psychosocial rehabilitation and day care programs such as pre-employment preparation programmes (e.g. courses to improve interview skills, resume coaching, etc.). There were 33 such services available in the local area with a median of 58 places available to clients	12	No evidence that IPS was of significant benefit in achieving competitive employment. No significant difference between the IPS group (13%) and the TAU condition (7%) in obtaining competitive employment
Heslin et al (2011) (Follow up study of Howard et al (2010))	UK			188		24	Significantly more participants obtained competitive employment in the IPS condition than in the TAU condition (22% v 11%)

Hoffmann et al (2012)	Switzerland	4.3	2.4	100	TVR deemed by the Swedish Federal Social Insurance Office to be the best locally available alternative. Typically placed in sheltered workshops for 6-12 months, after which a 3-6 month training stint in a companion open market may be feasible	24	Participants in the supported employment group were more likely to be competitively employed compared with those in the TVR group (45.7% v 16.7%)
Hoffmann et al (2014) (Follow up study of Hoffmann et al (2012))	Switzerland			100		60	Participants in the supported employment group were more likely to be competitively employed compared with those in the TVR group (65% v 33%)
Killackey et al (2008)	Australia	4.9	3.1	41	TAU which involved individual case management and medical review, referral to external vocational agencies and involvement in group programmes. Group programmes may involve participation in the vocationally oriented groups	6	Significantly more participants obtained competitive employment in the IPS condition than in the TAU group (31.7% v 9.5%)
Oshima et al (2014)	Japan	4	3.9	37	Conventional vocational rehabilitation (CVR) services at a community support centre. Program consisted of prevocational training in various work groups in a simulated environment		Significantly more participants in the IPS group obtained competitive employment compared to those who received conventional vocational rehabilitation services (44.4% v 10.5%)
Tsang et al (2009)	Hong Kong	6.7	6.6	163	TVR which involved a vocational assessment carried out at vocational rehabilitation service centres throughout Hong Kong. Pre-vocational training was then implemented on entry-level job tasks which aimed at enhancing specific work skills for later upgrading to participating in a sheltered workshop or competitive employment	15	IPS participants demonstrated better rates of competitive employment than TVR participants, (53.6% v 7.3%)
Wong et al (2008)	Hong Kong	6.8	1.8	92	CVR programs at a local hospital. The program was implemented in the form of prevocational training	18	Significantly more participants in the supported employment group

in various work groups in a simulated environment. Utilised a 'stepwise train-place' approach. Aim was to equip participants with skills related to choosing, obtaining and keeping competitive employment. Also encouraged to seek open competitive employment by themselves

obtained competitive employment over the 12 months of follow-up compared to the CVR group (70% v 29%)

CVR, conventional vocational rehabilitation; TAU, treatment as usual; TVR, traditional vocational rehabilitation; TVS, traditional vocational services.

†Data collected from the World Development Indicators online database.

**Table DS3** Summary of studies included in meta-analyses from North American countries

Study	Country	Unemployment rate for general population (annual %) * †	GDP growth (annual %) * †	Subjects	Details of comparison group	Follow-up (months)	Results
Bond et al (2007)	USA	4.8	2.9	187	Diversified placement approach (DPA), which is a vocational program that adheres to clubhouse values. Involves a step-wise approach of pre-vocational training and assessment for work readiness. While competitive employment is a goal of DPA, it is rarely the first vocational placement	24	Significantly more participants obtained competitive employment in the IPS condition then in the DPA condition (75% v 33.7 %)
Drake et al (1996)	USA	6	3.4	143	Group skills training (GST), which involved pre-employment group training with a focus on choosing, getting and keeping a job. Following the initial skills training clients met with staff in a group twice each week to continue building interview skills and to discuss potential job leads and interviews. Once employed, clients continued to receive individual support services from GST staff	18	Significantly more participants obtained competitive employment in the IPS condition then in the GST condition (78.1 % v 40.3 %)
Drake et al (1999)	USA	6	3.4	152	Enhanced vocational rehabilitation (EVR), which consisted of vocational rehabilitation services provided by several well established agencies. All EVR agencies encouraged competitive employment but used step-wise approaches, primarily involving paid work adjustment training in a sheltered workshop	18	Significantly more participants obtained competitive employment in the IPS condition then in the EVR condition (60.8 % v 9.2 %)

Drake et al (2013)	USA	8.6	2	2055	The control group included usual care over the 23 study sites, which typically included outpatient physician visits, medication and hospital care	24	Significantly more participants obtained competitive employment in the supported employment condition than in the control group (52.4% v 33%)
Gold et al (2006)	USA	4.3	4.5	143	Gradual work-adjusted experiences followed by placement in a 'set-aside' job. A 6-month time limit on holding set-aside jobs, after which the jobs turned over to new participants. For participants judged as ready for competitive work, specialists assisted with a brief job search and two weeks of job support. Program was called Supported Employment Program (SEP), despite its traditional vocational rehabilitation philosophy	24	Significantly more ACT-IPS participants held competitive jobs than in the SEP condition (64% v 26%)
Latimer et al (2006)	Canada	7.5	2.1	149	Traditional vocational services (TVS) which involved access to various vocational services at a hospital (e.g. sheltered workshops, job-finding-skills training, etc). None of these programmes had competitive employment as their immediate goal. In addition clients could enrol in a government program that offers part time work in exchange for welfare benefits or be referred to a community agency, which aimed to place clients in jobs reserved for people with disabilities	12	Significantly more participants in the supported employment group obtained competitive employment over the 12 months of follow-up compared to the TVS group (47% v 18%)

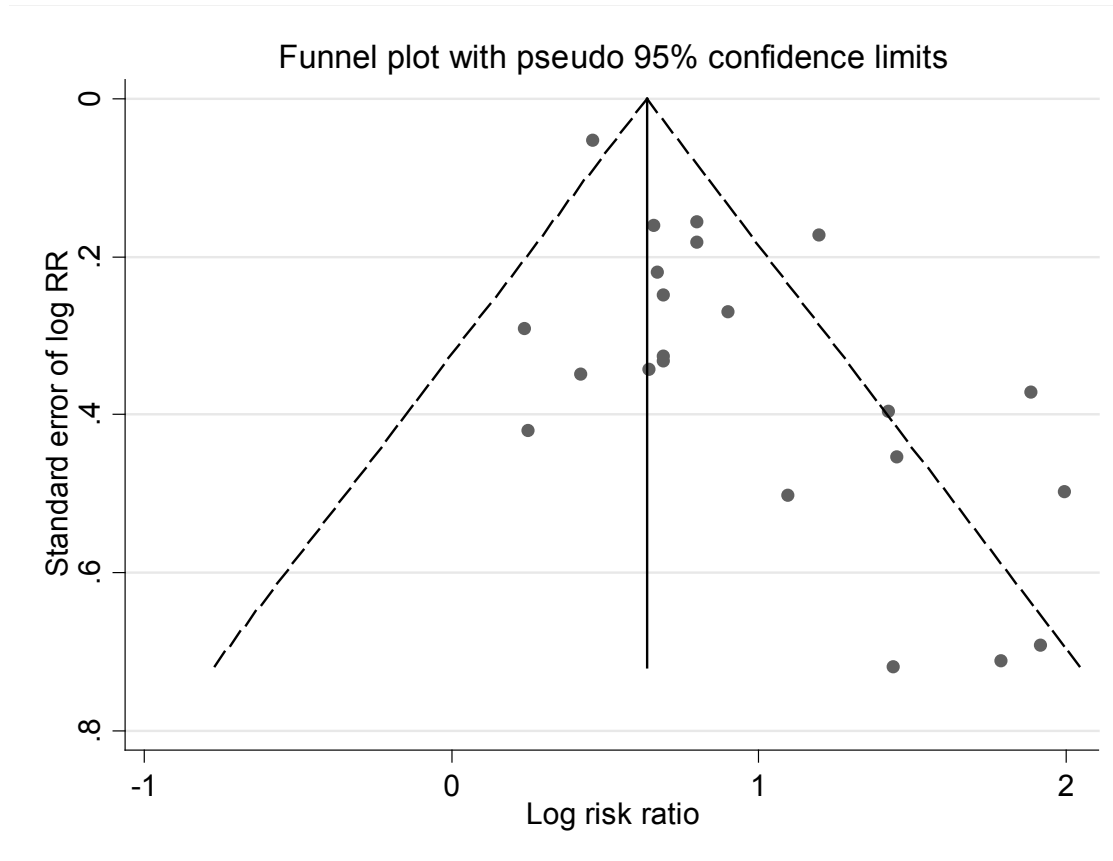
Lehman et al (2002)	USA	5	4.3	219	In-house vocational training which typically focused on appropriate social interaction in the workplace, work endurance and acceptance of supervision. In-house sheltered work and factor enclave projects also available. Clients ready for competitive work were provided with in-house assistance or referred to city-based vocational service programs	24	Significantly more participants obtained competitive employment in the IPS condition than in the comparison condition (27 % v 7%)
Mueser et al (2004)	USA	5	4.3	204	Psychosocial rehabilitation (PSR) based on prevocational training. This involved pre-employment training focusing on clerical and janitorial skills followed by transitional employment from paid part time jobs to independent employment. A second comparison group involved brokered supported employment. Both comparison groups were located off site from a mental health centre NOTE: The two control groups were combined for the purposes of this meta-analysis.	24	Significantly more participants obtained competitive employment in the IPS condition (73.9%) than in the PSR condition (18.2%) or brokered supported employment (27.5%)
Twamley et al (2012)	USA	9.4	2.1	58	Conventional psychosocial rehabilitation (CVR) which involved a brokered program. Clients had access to a vocational counsellor and job-readiness and prevocational coaching classes	12	Significantly more participants obtained competitive employment in the IPS condition than in the CVR group (57% v 29%)

CVR, conventional psychosocial rehabilitation; DPA, diversified placement approach; EVR, enhanced vocational rehabilitation; GST, group skills training; PSR, psychosocial rehabilitation; SEP, supported employment programme.

†Data collected from the World Development Indicators online database.



**Fig. DS1** Funnel plot using data from the 19 included studies.



# BJPpsych

The British Journal of Psychiatry

## Supported employment for people with severe mental illness: systematic review and meta-analysis of the international evidence

Matthew Modini, Leona Tan, Beate Brinchmann, Min-Jung Wang, Eoin Killackey, Nicholas Glozier,  
Arnstein Mykletun and Samuel B. Harvey

*BJP* 2016, 209:14-22.

Access the most recent version at DOI: [10.1192/bjp.bp.115.165092](https://doi.org/10.1192/bjp.bp.115.165092)

---

### Supplementary Material

Supplementary material can be found at:  
<http://bjp.rcpsych.org/content/suppl/2016/04/11/bjp.bp.115.165092.DC1.html>

### References

This article cites 44 articles, 14 of which you can access for free at:  
<http://bjp.rcpsych.org/content/209/1/14#BIBL>

### Reprints/ permissions

To obtain reprints or permission to reproduce material from this paper, please  
write to [permissions@rcpsych.ac.uk](mailto:permissions@rcpsych.ac.uk)

### You can respond to this article at

[/letters/submit/bjprcpsych;209/1/14](http://bjp.rcpsych.org/letters/submit/bjprcpsych;209/1/14)

### Downloaded from

<http://bjp.rcpsych.org/> on July 18, 2016  
Published by The Royal College of Psychiatrists

---